

# Great crested newt district level licensing



Rob Cameron  
February 2017

# New Licensing Policies



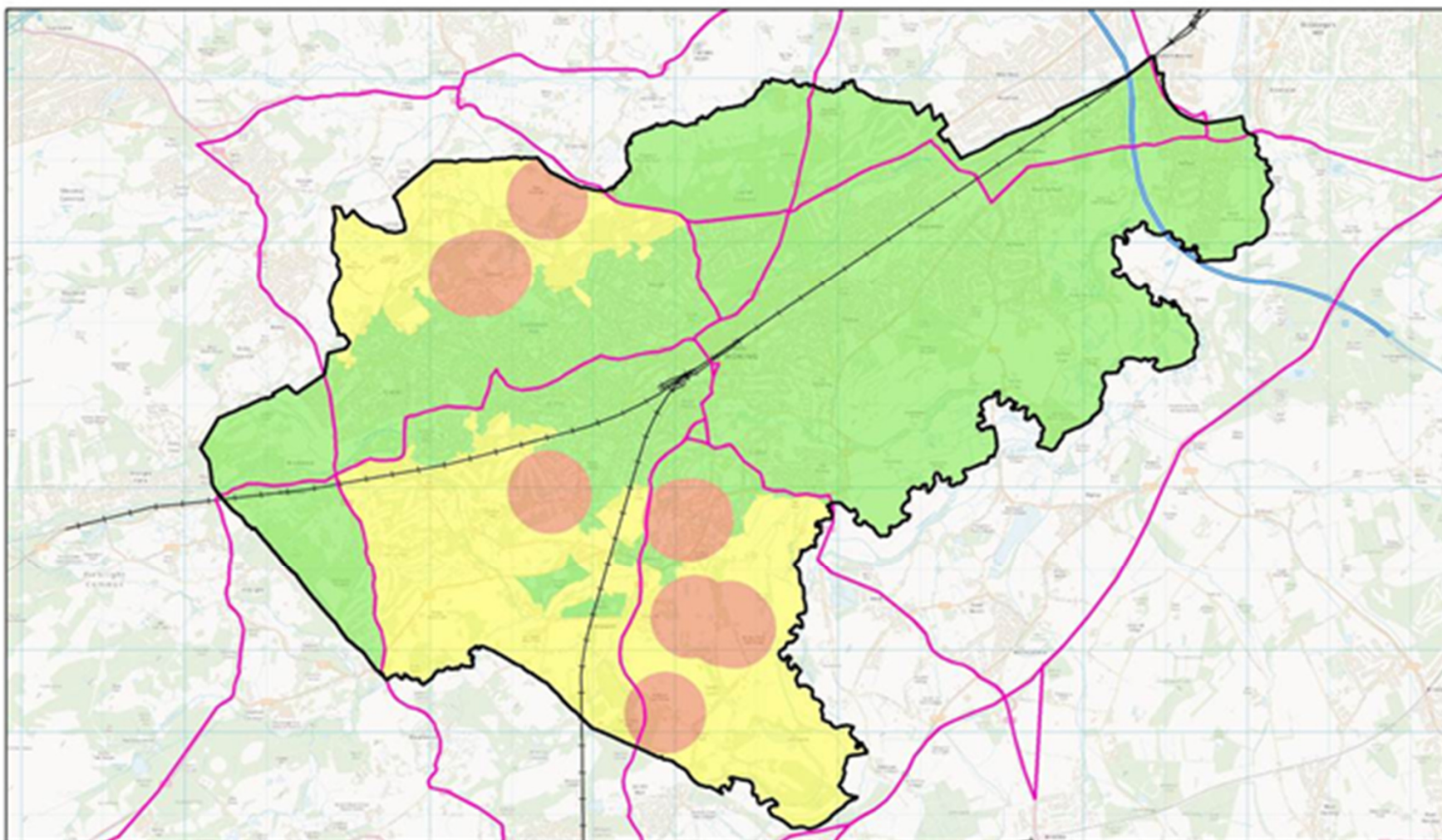
- Exclusion, trapping and translocation
- Location of habitat compensation
- Temporary habitat
- Proportionate survey/worst case scenarios



Focus on habitat

# The Woking Pilot

NATURAL  
ENGLAND



# The Woking Pilot

NATURAL  
ENGLAND



# District licensing process



- **Up-front** survey and data collation, impact assessment, strategy and advice to LPA
- Baseline overview of GCN distribution and habitat at a **whole district level**
- Habitat compensation for the full impact of the development plan, **ahead of the profile of impact**
- Cost recouped from developers

# Benefits of district licensing



- More influence on the planning system
- Better protection of the most important sites
- More, better, more securely protected habitat provision
- Improved knowledge of GCN status

# The scale of the benefits



- **Current cost of licensing £45 million**
- **Site by site GCN licensing 2015**
  - Aquatic habitat - net gain 1.75ha, *29 ponds*
  - Terrestrial habitat – net loss 738ha
  - Monitoring - national baseline 350 ponds over 6 years, with no follow up secured
- **Alternative delivery potential**
  - Stewardship rates - *6500 ponds per annum*
  - Monitoring – baseline 9,000 ponds +follow up funding

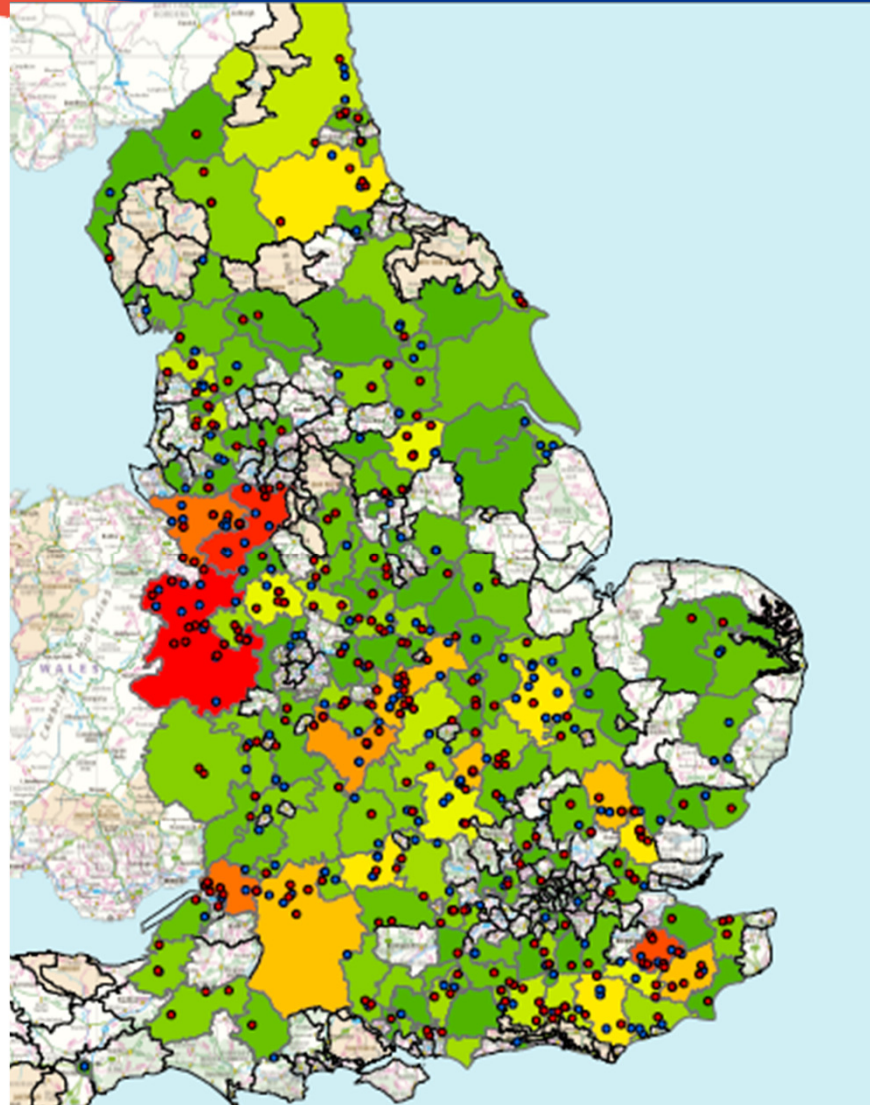
# National roll out of district licensing



- 150 districts
- Over 3 years
- 77% of current licensing
- £7million Government investment in set up
- £18million business as usual over 10 years

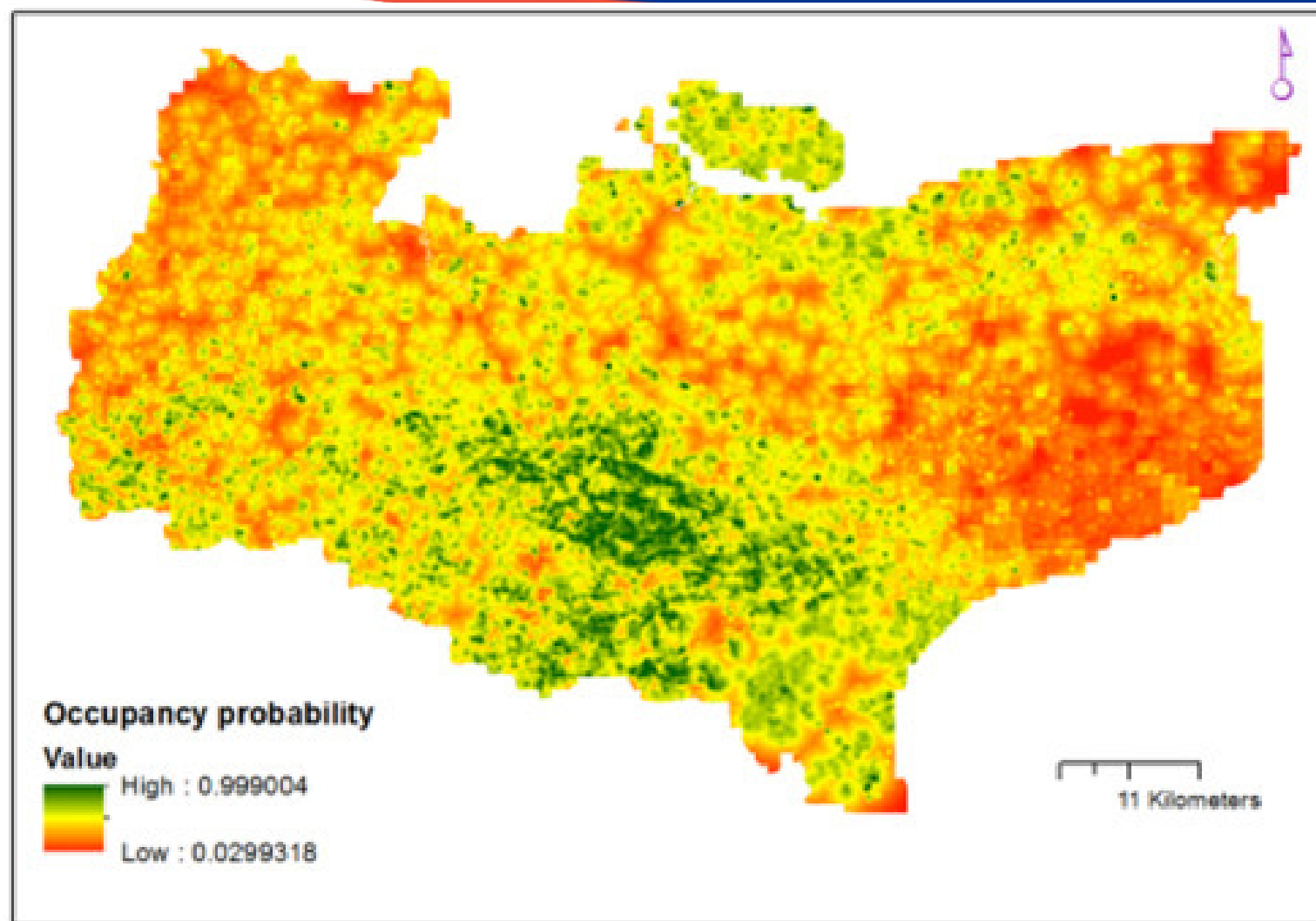
# GCN new licence applications 2015 and 2016

NATURAL  
ENGLAND



## Learning still to be done – the Kent project

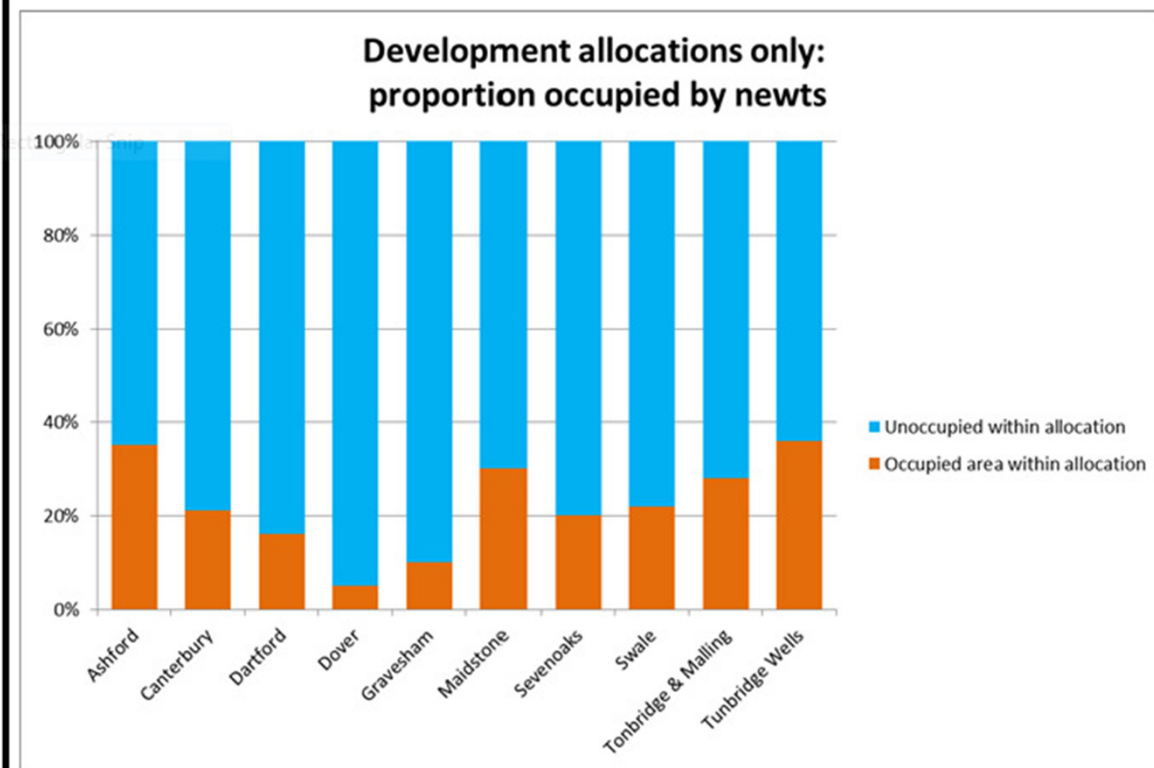
NATURAL  
ENGLAND



# The effect of GCN on development

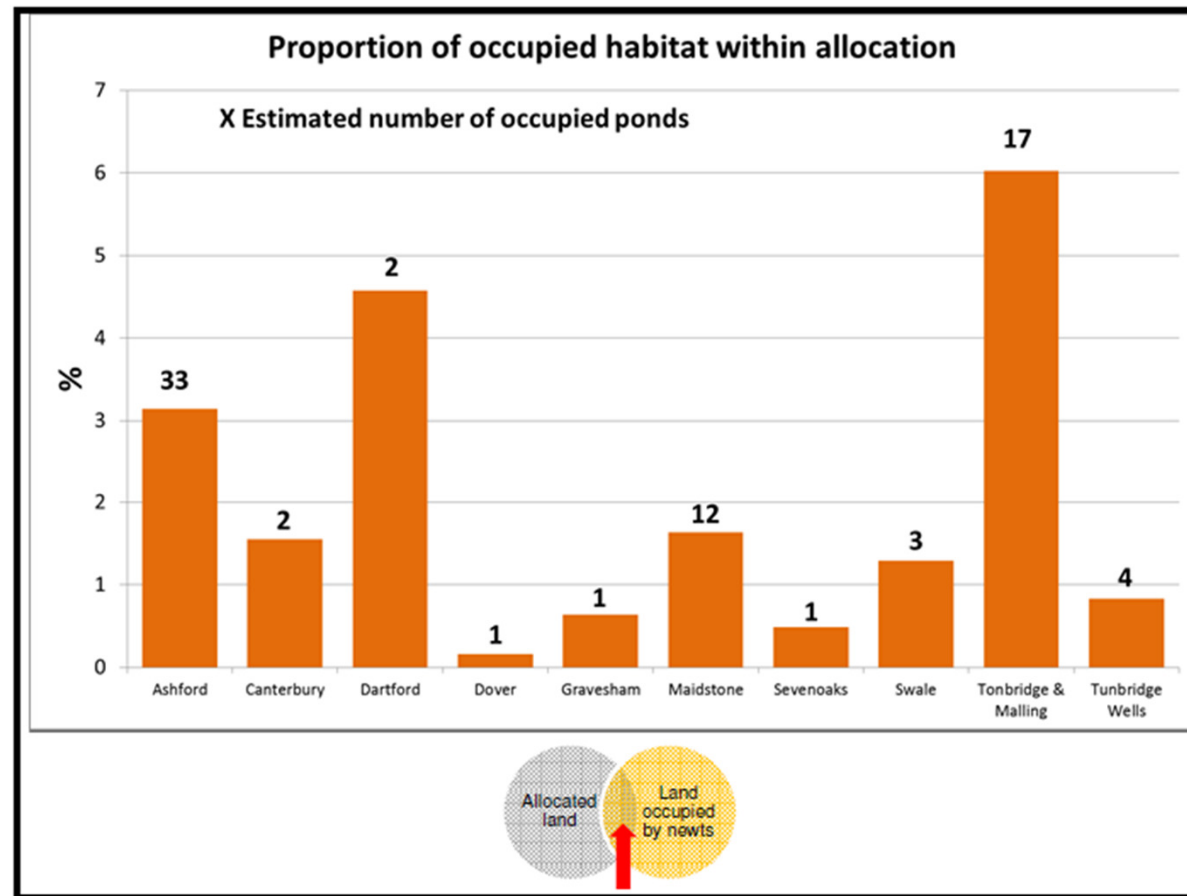
NATURAL  
ENGLAND

## B) Distribution by development allocation

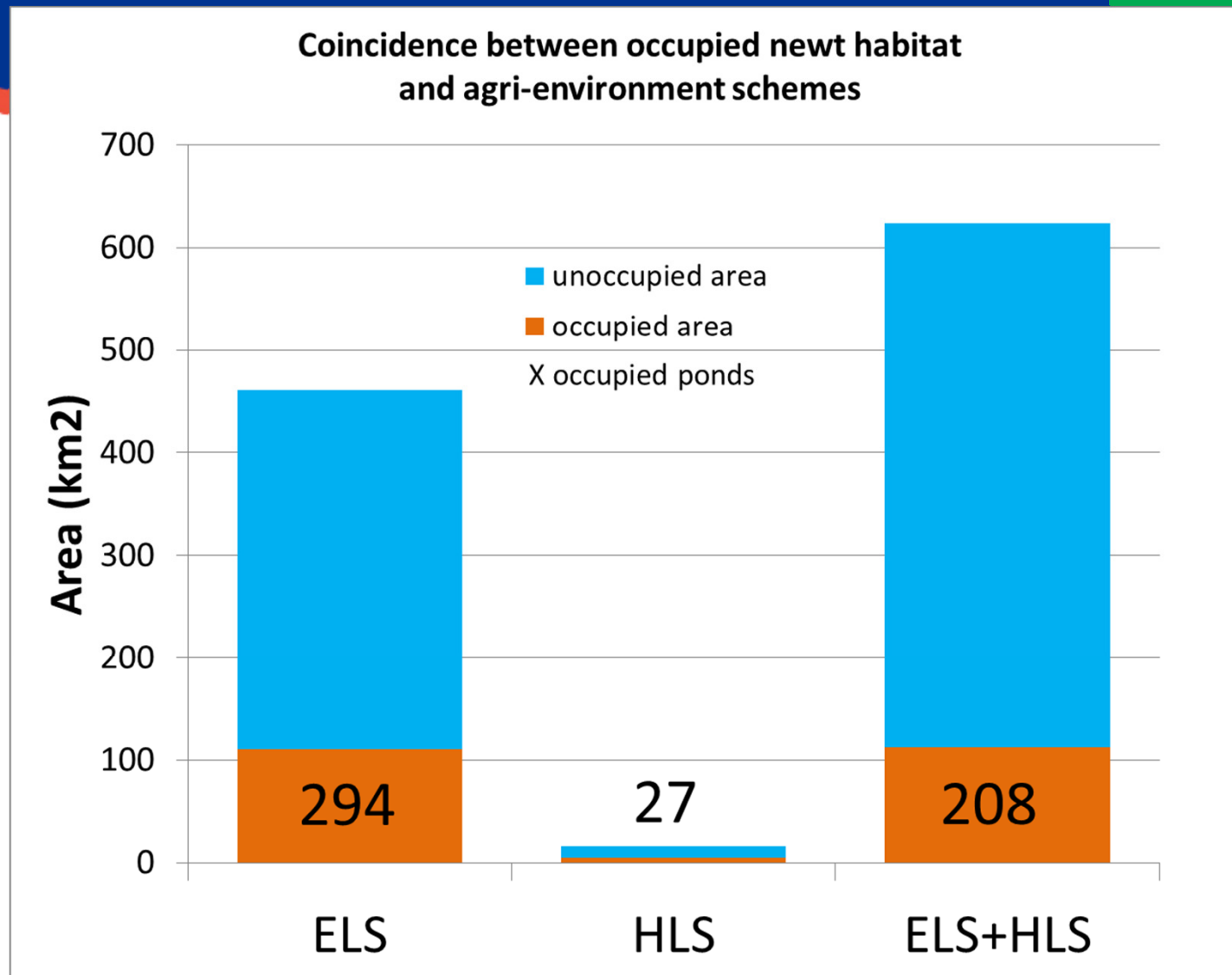


# The effect of development on GCN

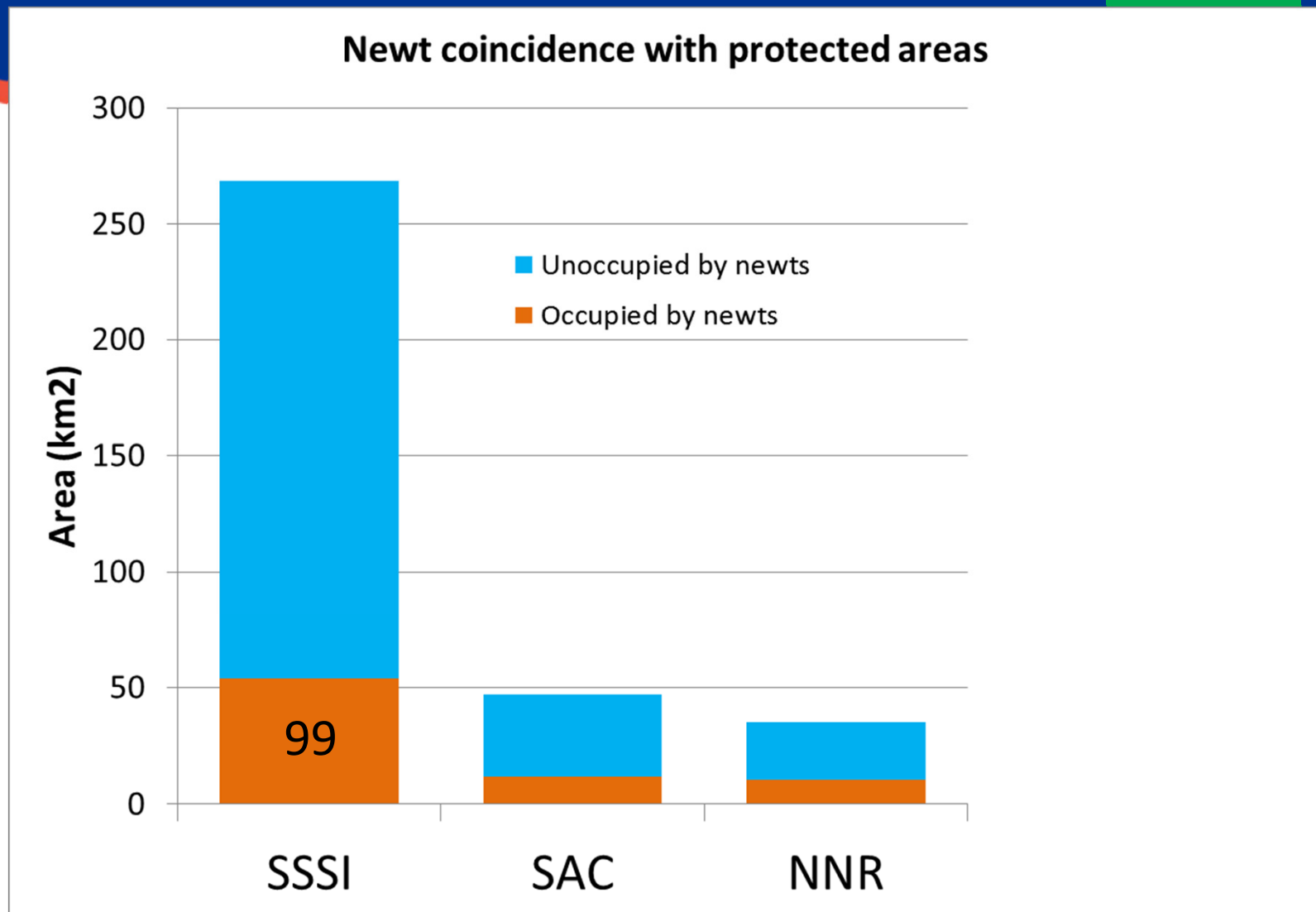
NATURAL  
ENGLAND



## C) Coincidence with agri-environment schemes



## D) Coincidence with protected areas and landscapes



# The Kent project



- County conservation strategy
  - Agri-environment
  - SSSIs
  - Publicly owned land
  - Nature reserves
  - Forestry land
  - etc
- Definition of favourable conservation status
- 6 district strategies

## Warwickshire

- The County Council is taking the lead
- Demonstration on expanding the role of councils
- Demonstrating how it can bring an income stream into local authority ecology services

# Partnership



- Data to test baselines
- Scrutiny of distribution maps
- Having your say about impacts
- Identifying habitat improvement target areas and opportunities
- Monitoring